

ROTARY COUPLINGS

In-line types GGIL

INTRODUCTION

Holmbury presents a new addition to its range, Rotary Couplings. Produced in both in-line and 90° configurations, these items are normally available from stock for rapid despatch.

APPLICATIONS

Holmbury Rotary Couplings are used to protect hydraulic lines that are subjected to torsional forces or rotational motion.

CONSTRUCTION

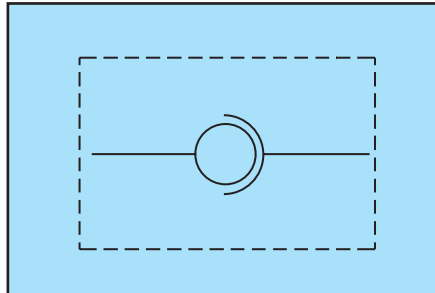
The spindle is carried on a roller bearing and has a low friction shaft seal that can rotate at maximum pressure with low torque.

MATERIALS

Zinc plated, hardened steel body. Choice of BSP, NPT or SAE port threads.

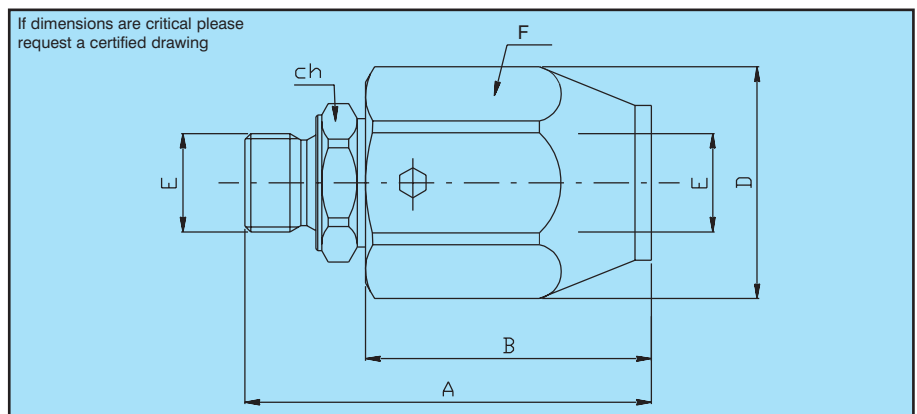
OPTIONAL SPECIFICATION AVAILABLE TO ORDER:

Chrome plated body
Metric thread
Viton seals



RATINGS

Size		01	02	03	04	05	06	07	09
Max Flow	l/min	25	45	80	120	150	200	250	300
Max Pressure	bar	400	400	360	310	280	250	210	180
Max Rotary Speed	rev/min	500	400	370	280	230	200	170	140



ORDER CODES

	GGIL	03	B
In-line rotary coupling			
Size - from 01 to 09 see table opposite			
Thread form			
B = BSP			
N = NPT			
S = SAE			

Example: GGIL 03 B
In-line Rotary Coupling, 1/2" BSP ports.

DIMENSIONS

Size	A	B	D	E BSP	E NPT	E SAE (UNF THD)	F	CH	W Weight kg
01	62	42	33	1/4"	1/4"		CH 30	19	0.21
02	65	44	37	3/8"	3/8"	1/2" (3/4-16)	CH 34	24	0.27
03	74	50	40	1/2"	1/2"	5/8" (7/8-14)	CH 36	27	0.33
04	80	50	49	3/4"	3/4"	3/4" (1 1/16-12)	CH 45	34	0.54
05	90	57	60	1"	1"	1" (1 5/16-12)	Ø 60	41	1.03
06	98	63	60	1 1/4"	1 1/4"	1 1/4" (1 5/8-12)	Ø 60	50	1.14
07	108	70	70	1 1/2"	1 1/2"	1 1/2" (1 7/8-12)	Ø 70	55	1.68
09	115	76	85	2"	2"		Ø 85	65	2.52

90° types GG90

CONSTRUCTION

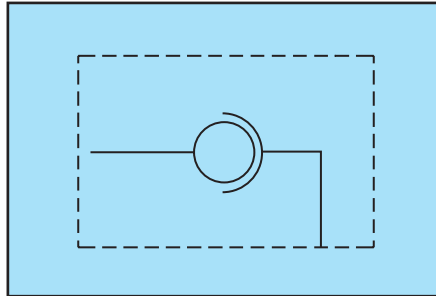
The spindle is carried on a roller bearing and has a low friction shaft seal that can rotate at maximum pressure with low torque.

MATERIALS

Zinc plated, hardened steel body.
Choice of BSP, NPT or SAE port threads.

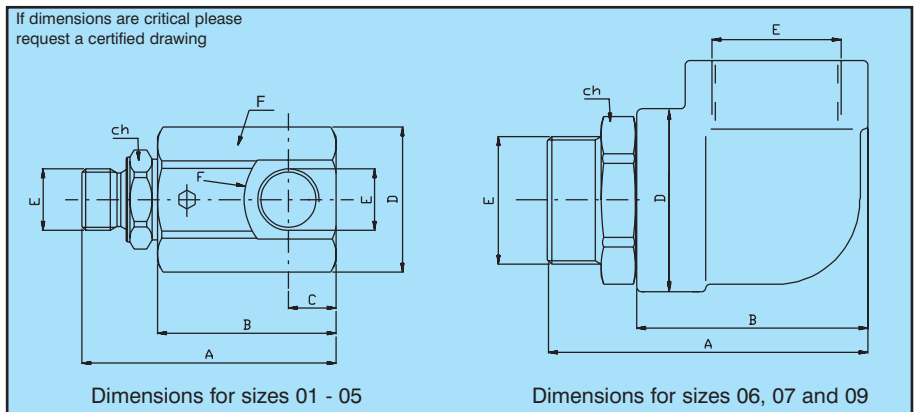
OPTIONAL SPECIFICATION AVAILABLE TO ORDER:

Chrome plated body
Metric thread
Viton seals



RATINGS

Size		01	02	03	04	05	06	07	09
Max Flow	l/min	25	45	80	120	150	200	250	300
Max Pressure	bar	400	400	360	310	280	250	210	180
Max Rotary Speed	rev/min	500	400	370	280	230	200	170	140



ORDER CODES

GG90	06	B
90° rotary coupling		
Size - from 01 to 09 see table opposite		
Thread form		
B = BSP		
N = NPT		
S = SAE		

Example: GG90 06 B
90° Rotary Coupling, 1/4" BSP ports.

DIMENSIONS

Size	A	B	C	D	E BSP	E NPT	E SAE (UNF THD)	F	CH	W Weight kg
01	71	50	11	33	1/4"	1/4"		CH 30	19	0.21
02	77	56	15	38	3/8"	3/8"	1/2" (3/4-16)	CH 34	24	0.27
03	86	63	17	43	1/2"	1/2"	5/8" (7/8-14)	CH 38	27	0.33
04	100	70	20	56	3/4"	3/4"	3/4" (1 1/16-12)	CH 50	34	0.54
05	113		23	60	1"	1"	1" (1 1/16-12)	Ø 60	41	1.03
06	118	83	32	63	1 1/4"	1 1/4"	1 1/4" (1 5/8-12)		50	1.74
07	138	100	38	79	1 1/2"	1 1/2"	1 1/2" (1 7/8-12)		55	3.00
09	152	110	43	85	2"	2"			65	3.76